

RF wireless wall mounted RGB/W controller

11.1655.0002.00



Feature

- 1 zone
- Save 4 Scenes
- Sensitive Glass Touch Panel
- RF Signal
- White&black

Parameter

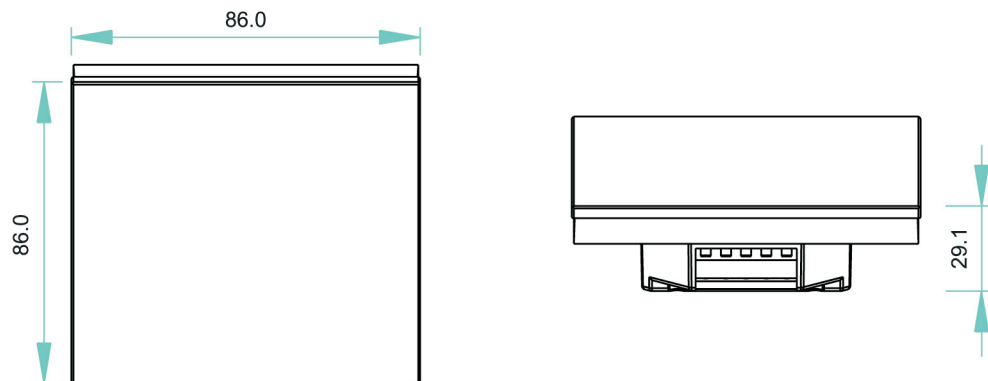
Remote

Part No.	Operation Voltage	Operation Frequency	DIMENSIONS ø/h (mm)	Remarks
11.1655.0002.00	110V-240Vac	434MHz/868MHz	86x86x29.1	Touch Sensor

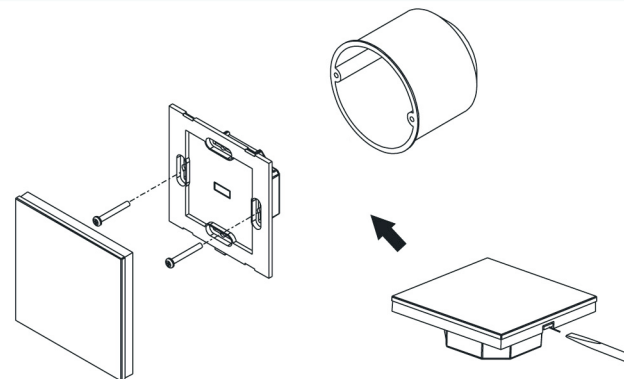
Receiver

Part No.	Input Voltage	Current	Output	Remarks
11.1655.0001.00	12-36VDC		4x(60-180)W	Constant voltage

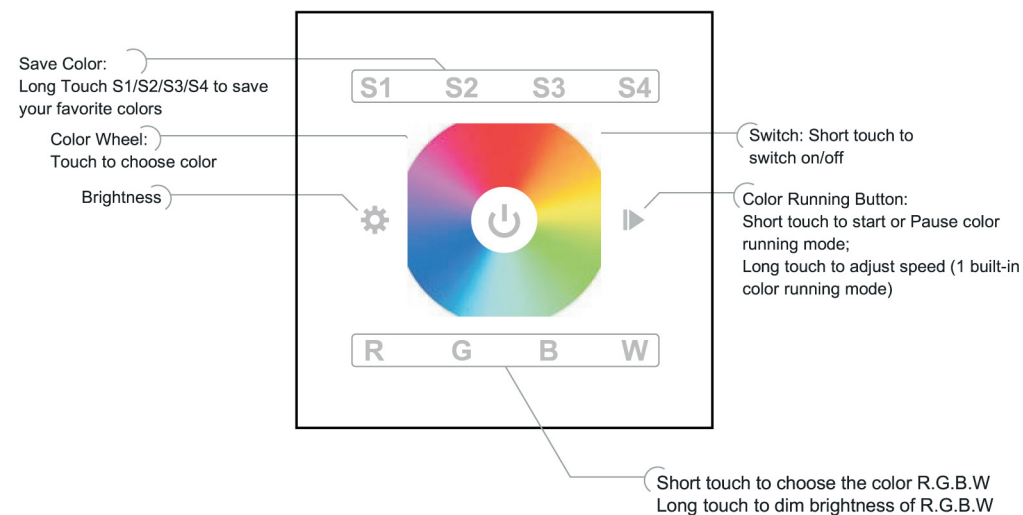
Product Size



Installation

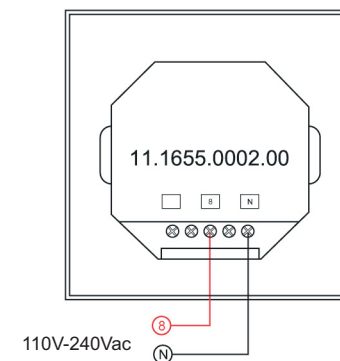


Button introduction

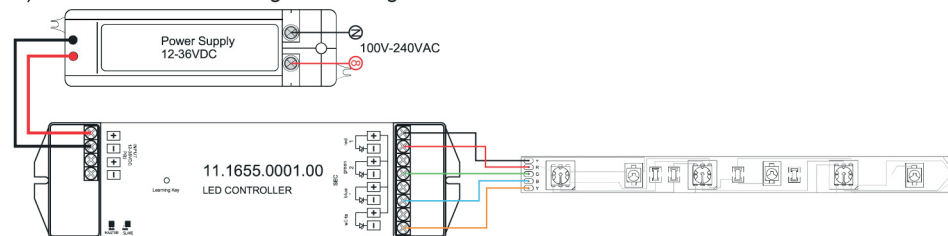


Wiring diagram

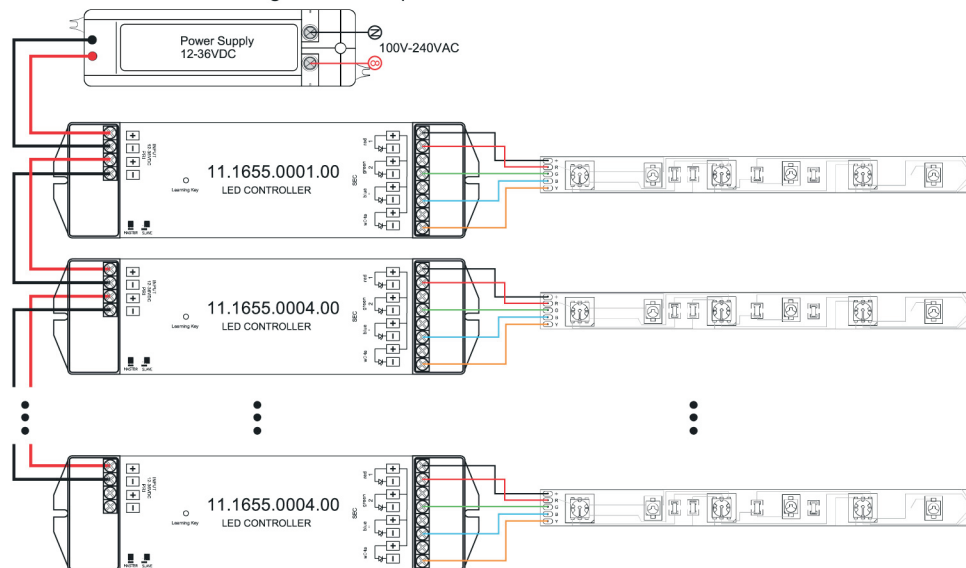
1)Sender Connection Diagram



2)Receiver Connection Diagram for Single Unit



"&Receiver Connection Diagram for Multiple Units



Safety & Warnings

- 1) The product shall be installed and serviced by a qualified person.
- 2) IP20. Please avoid the sun and rain. When installed outdoors, please ensure it is mounted in a water proof enclosure.
- 3) Always be sure to mount this unit in an area with proper ventilation to avoid overheating.
- 4) Please check if the output voltage of any LED power supplies used comply with the working voltage of the product.
- 5) Never connect any cables while power is on and always assure correct connections to avoid short circuits before switching on.
- 6) Please ensure that the cable is secured tightly in the connector
- 7) For update information please consult your supplier.

Operation

1. Do wiring according to connection diagram

2. Learning processa.

- a. Wake up the panel by touching ON/OFF button.
- b. Press at learning button on receiver.
- c. Then touch color wheel.
- d. Connected LED light will blink to confirm zone designation.
- e. Press at learning button on receiver over 5 seconds until LED light flash, then delete the learned ID.

3. how to save color or mode

S1 S2 S3 S4 buttons can save the color from mode or save color when you touch color wheel or touch R G B W buttons.

Press button ►, mode runs, see favorite mode---> press S1 or S2 or S3 or S4 button over 3 seconds until connected light flashes. Then it saved successfully.

Touch color wheel or touch color temperature button or touch any R G B W buttons----> see favorite color----> press button over 3 seconds until connected light flashes. Then it saved successfully

How to recall color or mode?

Touch S1/S2/S3/S4 directly. .